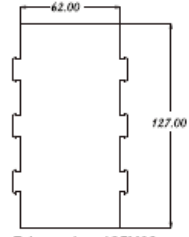
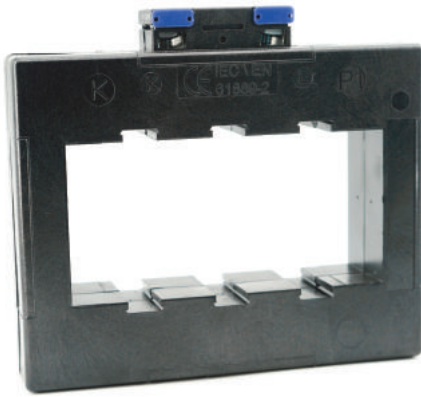


# CURRENT TRANSFORMERS

## AST1256 - WINDOW CURRENT TRANSFORMER

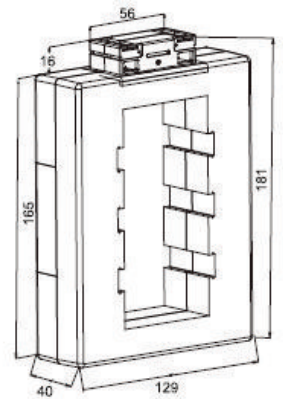
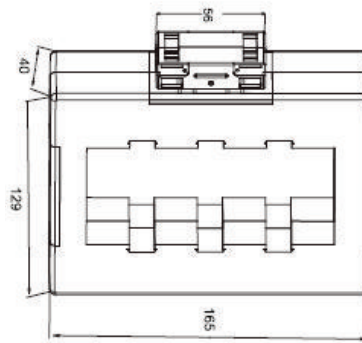


### Dimensions:

AST1256 165 x 145 x 40 mm

AST1256V 129 x 181 x 40 mm

Primary bar: 125 x 60 mm



### AST1256 / AST1256V Technical Features, Executions

| Primary rated current A | sec. 5 A / Rated burdens VA |         | sec. 1 A / Rated burdens VA |         |
|-------------------------|-----------------------------|---------|-----------------------------|---------|
|                         | Class 0.5                   | Class 1 | Class 0.5                   | Class 1 |
| 600                     | -                           | 10      | -                           | 10      |
| 750                     | 5                           | 15      | 5                           | 15      |
| 800                     | 7.5                         | 15      | 7.5                         | 15      |
| 1000                    | 15                          | 15      | 15                          | 15      |
| 1250                    | 15                          | 20      | 15                          | 15      |
| 1500                    | 15                          | 2       | 15                          | 15      |
| 1600                    | 15                          | 20      | 15                          | 15      |
| 2000                    | 15                          | 20      | 15                          | 20      |
| 2500                    | 15                          | 20      | 15                          | 20      |
| 3000                    | 10                          | 20      | 10                          | 20      |
| 3200                    | 15                          | 20      | 15                          | 20      |
| 3500                    | 20                          | 20      | 20                          | 20      |
| 4000                    | 30                          | 30      | 30                          | 30      |

### Accesories (please indicate in the order):

- Mounting feet (2 pieces) or
- primary fixing device

### Special executions (On request):

- Other ranges, classes or rated burden VA.

### General Mechanical Feature

- unbreakable plastic casing, polyamide
- difficult to inflame, according to UL 94 V0 and selfextinguishing
- nickel-plated secondary terminals with plus minus screws (2 Nm)
- integrated secondary terminal caps

### General Electrical Features

- rated frequency 50-60Hz (other frequencies on request)
- class of insulation E (other classes on request)
- rated short-time thermal current  $I_{th} = 60 \cdot I_N$
- nominal surge current  $I_{dyn} = 2.5 \cdot I_{th}$
- highest voltage for equipment  $U_m = 0,72kV$  (other voltages on request)
- rated power-frequency withstand voltage 3kV/1min
- instrument security factor FS5 or FS10