

# CURRENT TRANSFORMERS

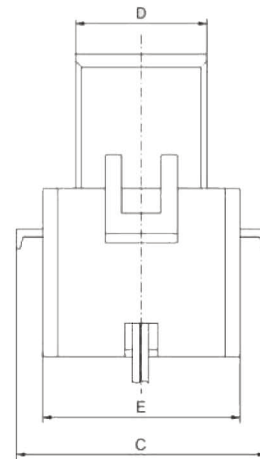
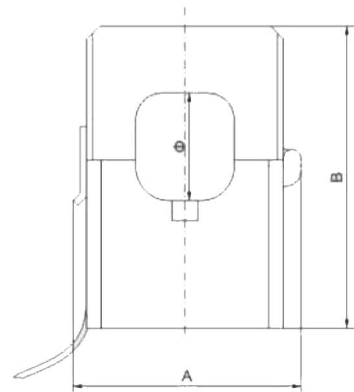
## TQ10 - Split core current transformer



- Designed to facilitate the installation in a new or already existing networks
- Easy opened
- They may be installed an connected without any supply interruption.

The TQ10 is a miniature current transformer. It has the characteristics of small size, light weight, and easy installation. Rated current output is V. Inner hole size 10mm. The flame-retardant plastic housing, protected from moisture, stable in performance, and require no maintenance. When installin g this product, it s strictly prohibited to open circuit secondary. After connecting the secondary circuit, CT should be hung on the bus or fixed with nylon tie

### Dimensions:



### TQ10 Technical Data

Rated frequency	50/60Hz
Rated test voltage	3kV Ac (1 min)
Rated short-time thermal current (I <sub>th</sub> )	60 I <sub>n</sub>
Rated dynamic current (I <sub>dyn</sub> )	2.5 I <sub>th</sub>
Rated voltage (U <sub>m</sub> )	0.72kV AC
Continuous overload (I <sub>d</sub> )	1.2 I <sub>n</sub>
Temperature	Operating: -10 ... 50°C Enviromental: -15 ... 40°C
Housing	self-extinguishing class VO
Safety factor	FS 5
Working voltage	≤ 660V
Elevation	≤ 1000m
Installation place	Indoor
Cable length	12 m

### TQ10 Technical Features

Type	Ratio	Accuracy class
TQ10	50A/0.333V	1
	60A/0.333V	1

### Dimensions in mm

Model	∅	A	B	C	D	E
TQ10	10	29	41	/	14	26