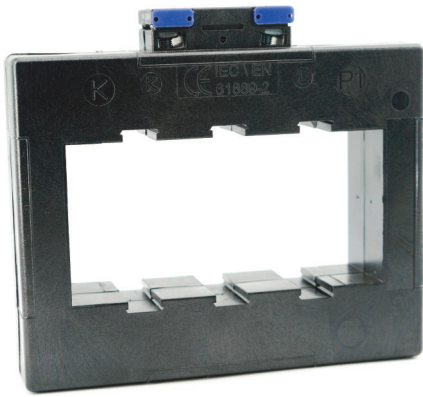
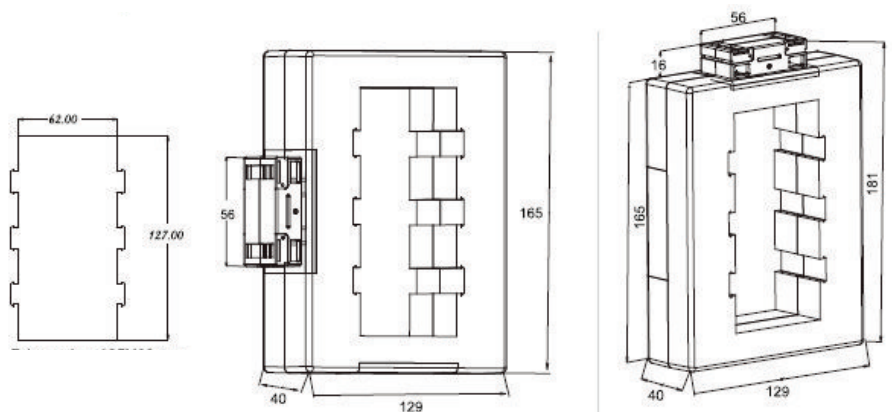


# CURRENT TRANSFORMERS

## AST1256 - WINDOW CURRENT TRANSFORMER



Dimensions:	
AST1256H	145 x 165 x 40 mm
AST1256V	129 x 181 x 40 mm
Primary bar:	125 x 60 mm



### AST1256H / AST1256V Technical Features, Executions

Primary rated current A	sec. 5 A / Rated burdens VA		sec. 1 A / Rated burdens VA	
	Class 0.5	Class 1	Class 0.5	Class 1
600	-	10	-	10
750	5	15	5	15
800	7.5	15	7.5	15
1000	15	15	15	15
1250	15	20	15	15
1500	10	2	15	15
1600	10	20	15	15
2000	15	20	15	20
2500	15	20	15	20
3000	10	20	10	20
3200	15	20	15	20

#### Accesories (included):

- Mounting feet (2 pieces)
- Primary fixing device

#### Special executions (On request):

- Other ranges, classes or rated burden VA.

#### General Mechanical Feature

- unbreakable plastic casing, polyamide
- difficult to inflame, according to UL 94 V0 and selfextinguishing
- nickel-plated secondary terminals with plus minus screws (2 Nm)
- integrated secondary terminal caps

#### General Electrical Features

- rated frequency 50-60Hz (other frequencies on request)
- class of insulation E (other classes on request)
- rated short-time thermal current  $I_{th} = 60 \cdot I_N$
- nominal surge current  $I_{dyn} = 2.5 \cdot I_{th}$
- highest voltage for equipment  $U_m = 0,72kV$  (other voltages on request)
- rated power-frequency withstand voltage 3kV/1min
- instrument security factor FS5 or FS10